

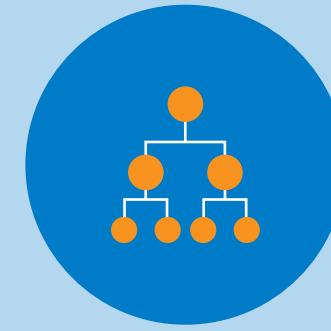


Legal entity

The legal entity, also referred to as user or license holder, is ultimately responsible for the safety of all activities involving GMOs inside the organization.



Ultimately responsible for safety of all GMO activities



Responsible for internal organization



Assignment of competences



Biological safety officer (BSO)

Within the organization, the **BSO** supervises the safety of all GMO activities. The BSO must be approved by the GMO Office and subsequently appointed by the legal entity.



Supervising activities with GMOs



Communication & education



Point of contact for colleagues & the GMO Office



Responsible employee

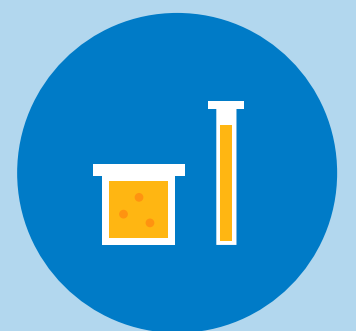
Per level I and level II notification one or multiple responsible employees need to be appointed. The responsible employee is responsible for the day to day operation of GMO activities.



Responsible for level I and II



Only registered in the internal administration



Responsible for day to day operations



Responsible employee

One responsible employee needs to be assigned **per level III permit**. The responsible employee oversees and is responsible for the day to day GMO activities that fall under their assigned level III permit.



Responsible for level III



Register at the GMO Office



Responsible for day to day operations